

# The Orchard



INFINITY GROUP

[www.infinity.gg](http://www.infinity.gg)



# The Orchard - Site Plan



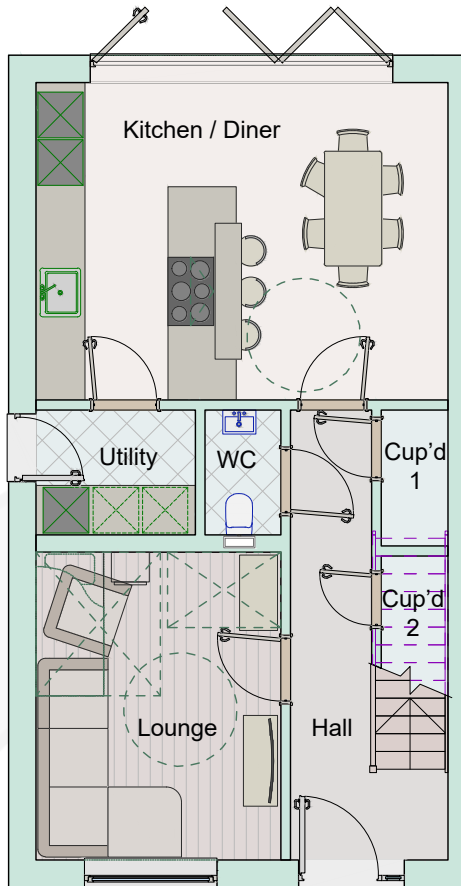
*The Orchard, Rue Du Friquet, Castel, GY5 7SS.*

# The Orchard - Schedule

UNIT NO.	UNIT	Gross Internal Floor Area (sq ft)	Amenity Area (sq ft)	BEDS	BATH / SHOWER	PARKING	PRICE	STATUS
1	House Type 1A (LH)	1687	872	3	3 + 1 no. GF WC	2	£995,000	Available
2	House Type 1A (RH)	1687	743	3	3 incl. GF shower	2	£985,000	Available
3	House Type 1B (LH)	1687	700	3	3 + 1 no. GF WC	2	£985,000	Available
4	House Type 1B (RH)	1687	648	3	3 (incl. GF shower)	2	£985,000	Available
5	Ground floor apartment (LH)	681	420	2 (incl. single)	1	1	£525,000	Available
6	1 <sup>st</sup> and 2 <sup>nd</sup> floor apartment (LH)	1082	146 (FF terrace)	2	2 (incl. FF shower)	2	£655,000	Available
7	Ground floor apartment (RH)	681	237	2 (incl. single)	1	1	£525,000	Available
8	1 <sup>st</sup> and 2 <sup>nd</sup> floor apartment (RH)	1082	146 (FF terrace)	2	2 (incl. FF shower)	2	£655,000	Available
9	House Type 2 (LH)	1343	495	3	3 (incl. GF shower)	2	£895,000	Available
10	House Type 2 (RH)	1343	635	3	3 (incl. GF shower)	2	£895,000	Available
11	House Type 3	1488	764	3	3 + 1 no. GF WC	2	£895,000	Available

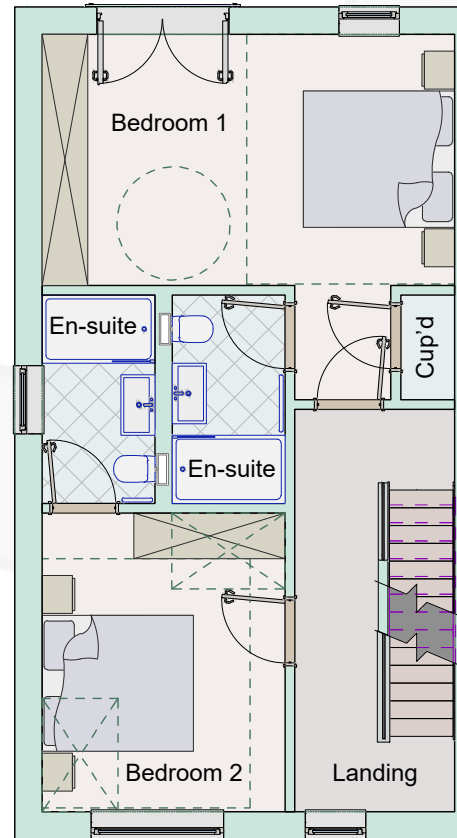
*For further details or viewings please contact our sales team.  
01481 238878 or sales@infinity.gg.*

# The Orchard - Unit 1 (House type 1A)



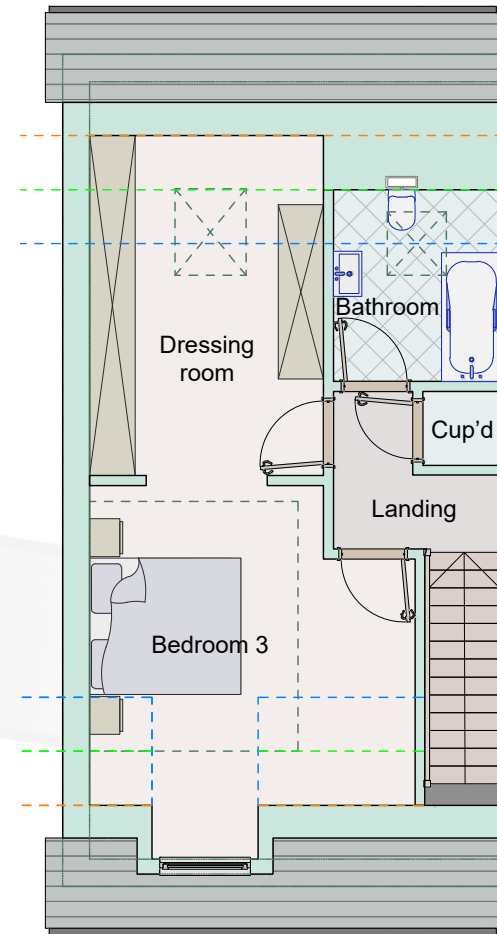
## Ground floor plan

Kitchen / Diner	22.9 m <sup>2</sup>
Utility	3.4 m <sup>2</sup>
WC	1.6 m <sup>2</sup>
Cup'd 1	1.3 m <sup>2</sup>
Cup'd 2	1 m <sup>2</sup>
Hall	7.6 m <sup>2</sup>
Lounge	13.3 m <sup>2</sup>



## First floor plan

Bedroom 1	19.5 m <sup>2</sup>
Bed 1 en-suite	4.1 m <sup>2</sup>
Cup'd	0.9 m <sup>2</sup>
Bedroom 2	12.7 m <sup>2</sup>
Bed 2 en-suite	4.1 m <sup>2</sup>
Landing	8.1 m <sup>2</sup>



## Second floor plan

Bedroom 3	15.6 m <sup>2</sup>
Dressing room	13.7 m <sup>2</sup>
Bathroom	4.6 m <sup>2</sup>
Cup'd	1 m <sup>2</sup>
Landing	3.4 m <sup>2</sup>

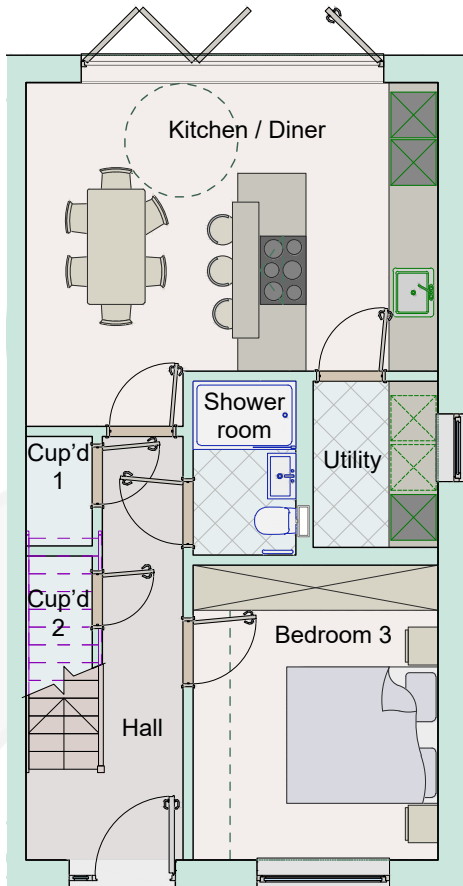
## Total Floor area's

Ground floor	56 m <sup>2</sup> 602 sq ft
First floor	56 m <sup>2</sup> 602 sq ft
Second floor	44.7 m <sup>2</sup> 481 sq ft
<b>Total (GIA)</b>	<b>156.7 m<sup>2</sup></b> <b>1687 sq ft</b>

\* Fitted wardrobes supplied in bedroom 1 only.

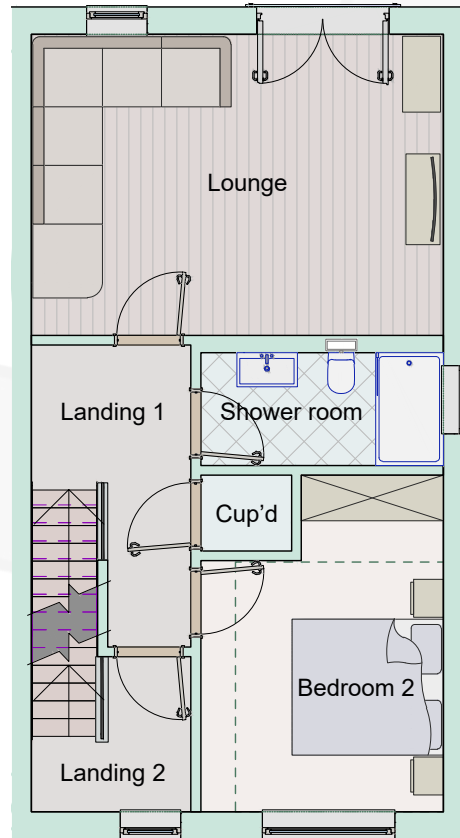
\*\* Kitchens, wardrobes and general layouts are for guidance purposes only.

# The Orchard - Unit 2 (House type 1A)



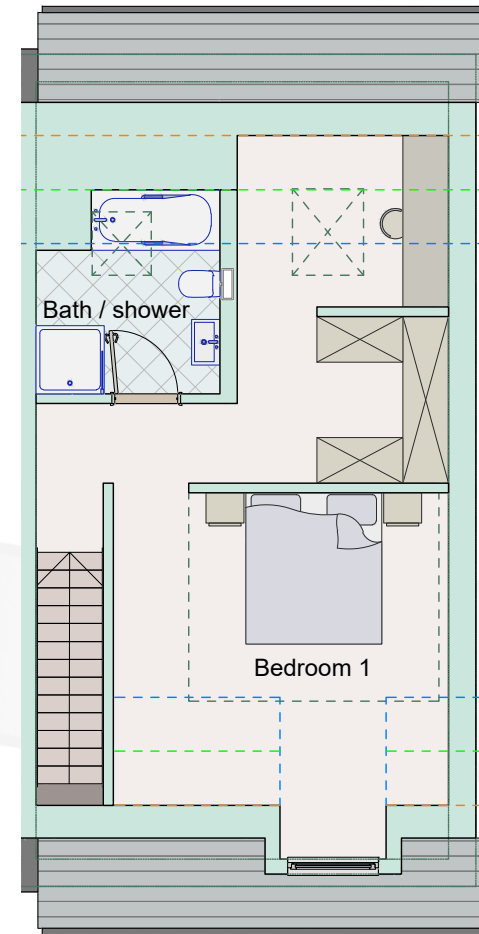
## Ground floor plan

Kitchen / Diner	22.3 m <sup>2</sup>
Utility	3.6 m <sup>2</sup>
Shower room	3.1 m <sup>2</sup>
Cup'd 1	1 m <sup>2</sup>
Cup'd 2	1 m <sup>2</sup>
Hall	7.2 m <sup>2</sup>
Bedroom 3	12.6 m <sup>2</sup>



## First floor plan

Lounge	21.7 m <sup>2</sup>
Shower room	4.8 m <sup>2</sup>
Cup'd	0.9 m <sup>2</sup>
Bedroom 2	12.8 m <sup>2</sup>
Landing 1	6.1 m <sup>2</sup>
Landing 2	3.2 m <sup>2</sup>



## Second floor plan

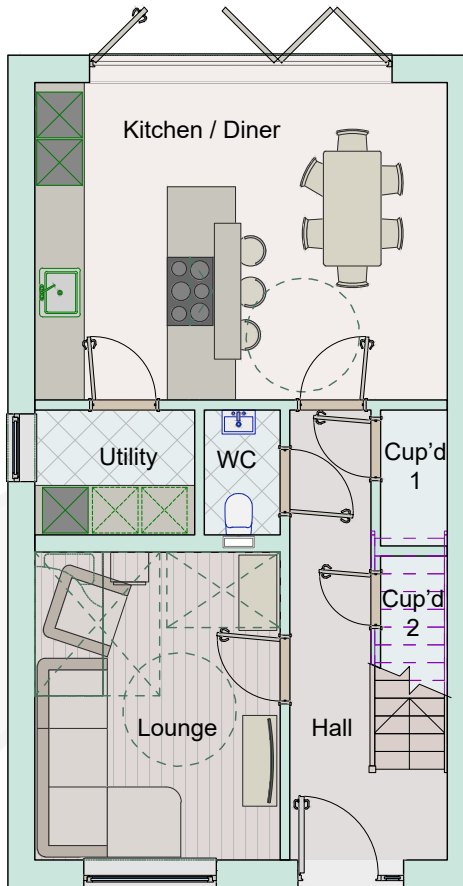
Bedroom 1	31.5 m <sup>2</sup>
Bath / shower	5.9 m <sup>2</sup>

## Total Floor area's

Ground floor	56 m <sup>2</sup> 602 sq ft
First floor	56 m <sup>2</sup> 602 sq ft
Second floor	44.7 m <sup>2</sup> 481 sq ft
<b>Total (GIA)</b>	<b>156.7m<sup>2</sup></b> <b>1687 sq ft</b>

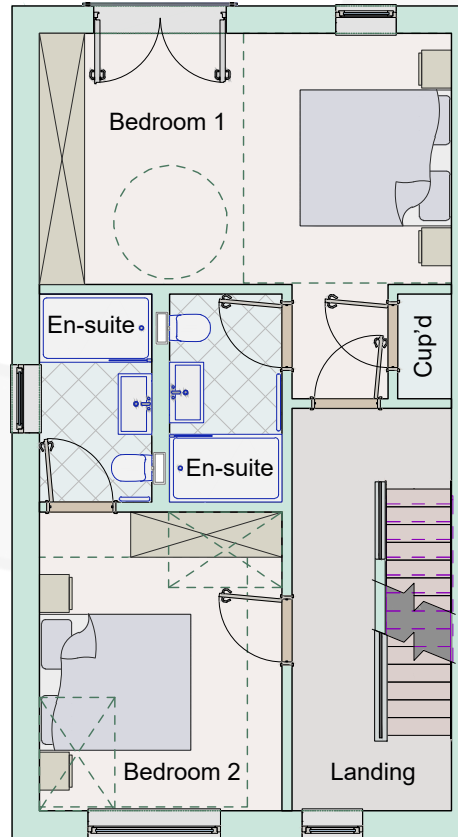
\* Fitted wardrobes supplied in bedroom 1 only.  
\*\* Kitchens, wardrobes and general layouts are for guidance purposes only.

# The Orchard - Unit 3 (House type 1B)



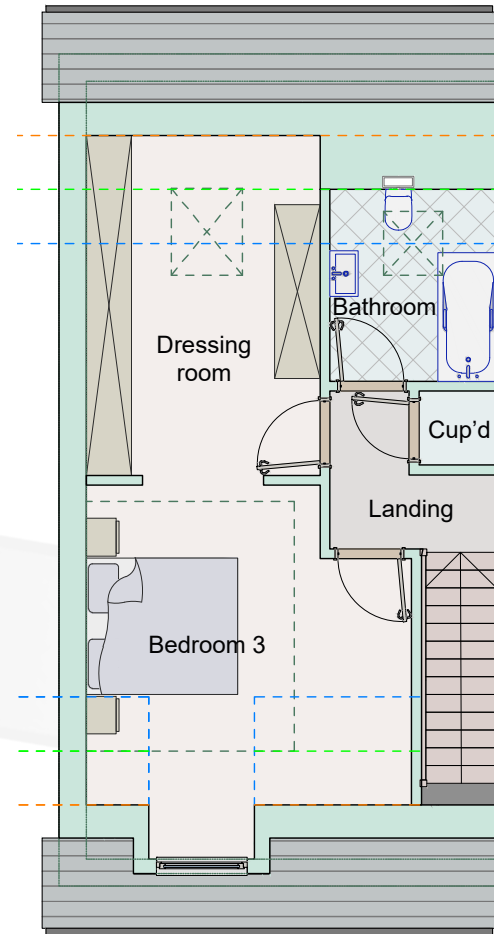
## Ground floor plan

Kitchen / Diner	22.9 m <sup>2</sup>
Utility	3.4 m <sup>2</sup>
WC	1.6 m <sup>2</sup>
Cup'd 1	1.3 m <sup>2</sup>
Cup'd 2	1 m <sup>2</sup>
Hall	7.6 m <sup>2</sup>
Lounge	13.3 m <sup>2</sup>



## First floor plan

Bedroom 1	19.5 m <sup>2</sup>
Bed 1 en-suite	4.1 m <sup>2</sup>
Cup'd	0.9 m <sup>2</sup>
Bedroom 2	12.7 m <sup>2</sup>
Bed 2 en-suite	4.1 m <sup>2</sup>
Landing	8.1 m <sup>2</sup>



## Second floor plan

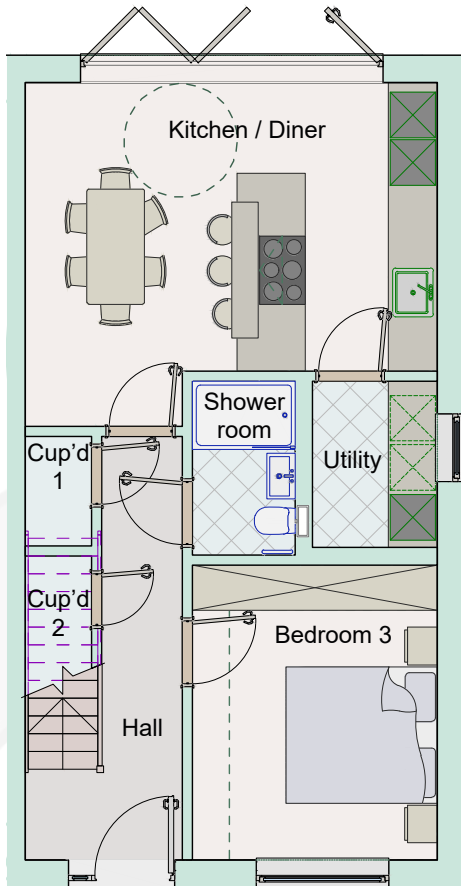
Bedroom 3	15.6 m <sup>2</sup>
Dressing room	13.7 m <sup>2</sup>
Bathroom	4.6 m <sup>2</sup>
Cup'd	1 m <sup>2</sup>
Landing	3.4 m <sup>2</sup>

## Total Floor area's

Ground floor	56 m <sup>2</sup> 602 sq ft
First floor	56 m <sup>2</sup> 602 sq ft
Second floor	44.7 m <sup>2</sup> 481 sq ft
<b>Total (GIA)</b>	<b>156.7 m<sup>2</sup></b> <b>1687 sq ft</b>

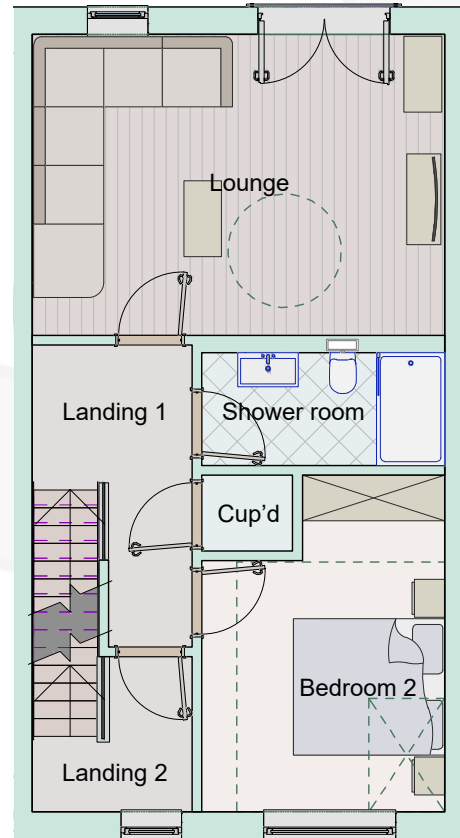
\* Fitted wardrobes supplied in bedroom 1 only.  
\*\* Kitchens, wardrobes and general layouts are for guidance purposes only.

# The Orchard - Unit 4 (House type 1B)



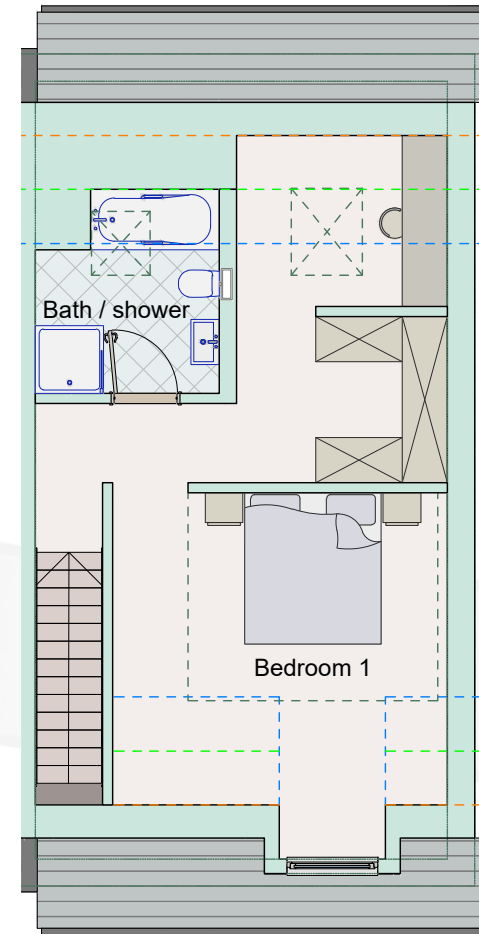
## Ground floor plan

Kitchen / Diner	22.3 m <sup>2</sup>
Utility	3.6 m <sup>2</sup>
Shower room	3.1 m <sup>2</sup>
Cup'd 1	1 m <sup>2</sup>
Cup'd 2	1 m <sup>2</sup>
Hall	7.2 m <sup>2</sup>
Bedroom 3	12.6 m <sup>2</sup>



## First floor plan

Lounge	21.7 m <sup>2</sup>
Shower room	4.8 m <sup>2</sup>
Cup'd	0.9 m <sup>2</sup>
Bedroom 2	12.8 m <sup>2</sup>
Landing 1	6.1 m <sup>2</sup>
Landing 2	3.2 m <sup>2</sup>



## Second floor plan

Bedroom 1	31.5 m <sup>2</sup>
Bath / shower	5.9 m <sup>2</sup>

## Total Floor area's

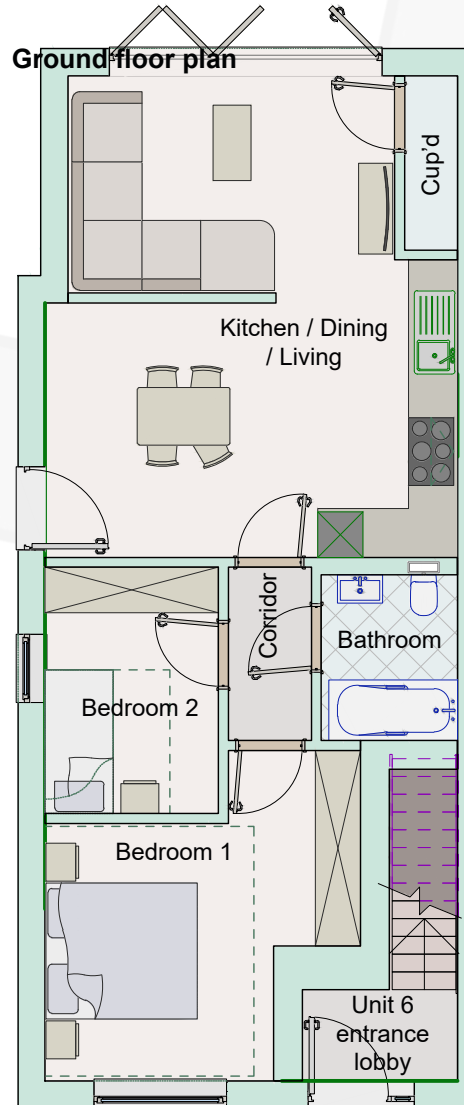
Ground floor	56 m <sup>2</sup> 602 sq ft
First floor	56 m <sup>2</sup> 602 sq ft
Second floor	44.7 m <sup>2</sup> 481 sq ft
<b>Total (GIA)</b>	<b>156.7m<sup>2</sup></b> <b>1687 sq ft</b>

\* Fitted wardrobes supplied in bedroom 1 only.

\*\* Kitchens, wardrobes and general layouts are for guidance purposes only.



# The Orchard - Unit 5



Kitchen / Dining / Living	31.3 m <sup>2</sup>
Bathroom	3.9 m <sup>2</sup>
Corridor	2.5 m <sup>2</sup>
Cup'd	1.4 m <sup>2</sup>
Bedroom 1	14 m <sup>2</sup>
Bedroom 2	7.5 m <sup>2</sup>

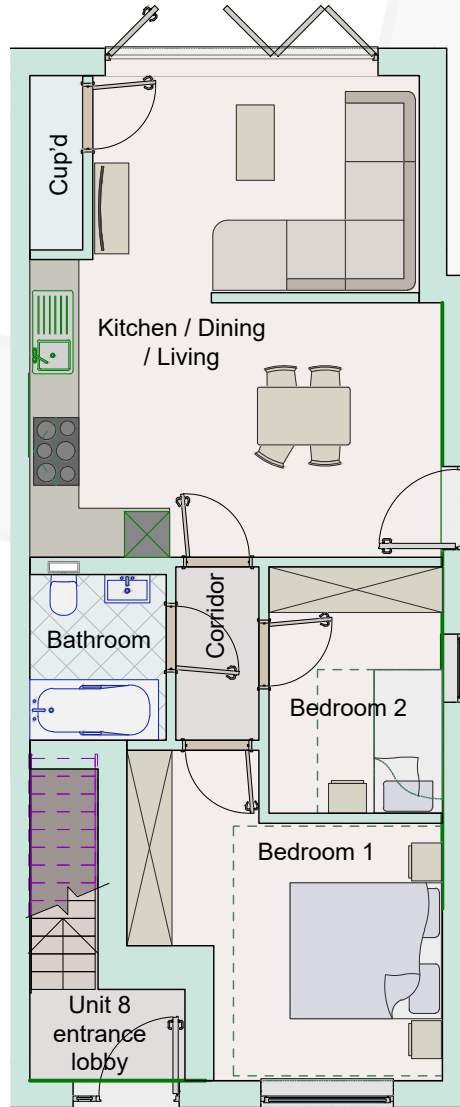
### Total Floor area's

Ground floor	63.3 m <sup>2</sup>
	681 sq ft
Total (GIA)	63.3 m <sup>2</sup>
	681 sq ft

\* Fitted wardrobes supplied in bedroom 1 only.  
 \*\* Kitchens, wardrobes and general layouts are for guidance purposes only.



# The Orchard - Unit 7



## Ground floor plan

Kitchen / Dining / Living	31.3 m <sup>2</sup>
Bathroom	3.9 m <sup>2</sup>
Corridor	2.5 m <sup>2</sup>
Cup'd	1.4 m <sup>2</sup>
Bedroom 1	14 m <sup>2</sup>
Bedroom 2	7.5 m <sup>2</sup>

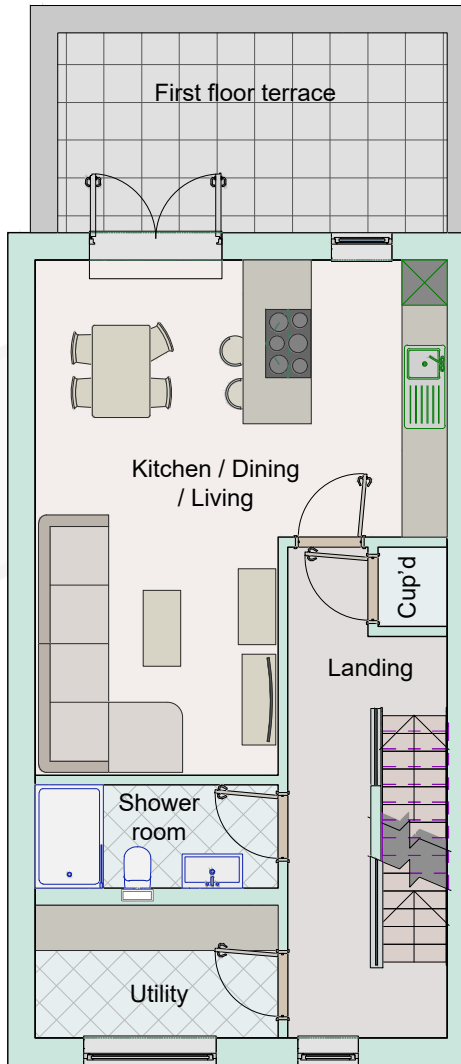
## Total Floor area's

Ground floor	63.3 m <sup>2</sup>
	681 sq ft
Total (GIA)	63.3 m <sup>2</sup>
	681 sq ft

\* Fitted wardrobes supplied in bedroom 1 only.

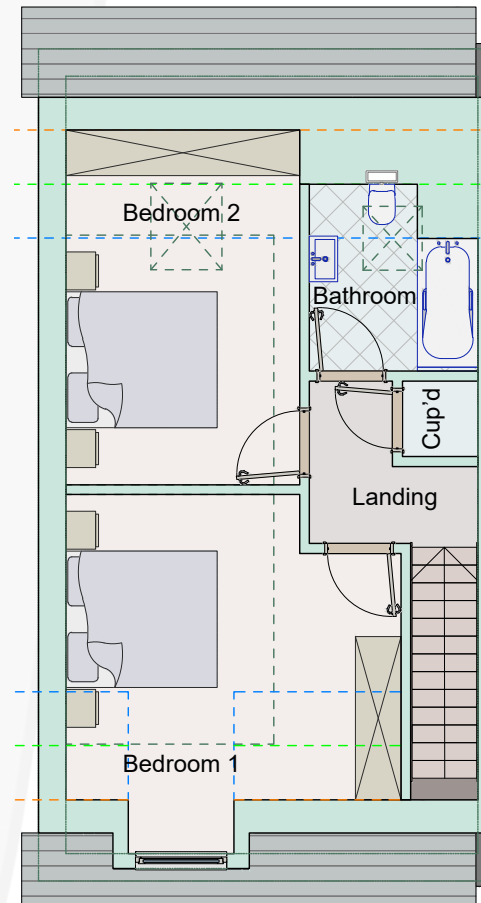
\*\* Kitchens, wardrobes and general layouts are for guidance purposes only.

# The Orchard - Unit 6



## First floor plan

Kitchen / Dining / Living	29.2 m <sup>2</sup>
Shower room	4.4 m <sup>2</sup>
Landing	9.6 m <sup>2</sup>
Cup'd	1.2 m <sup>2</sup>
Cup'd	0.8 m <sup>2</sup>
Cup'd	0.8 m <sup>2</sup>
Utility	3.7 m <sup>2</sup>



## Second floor plan

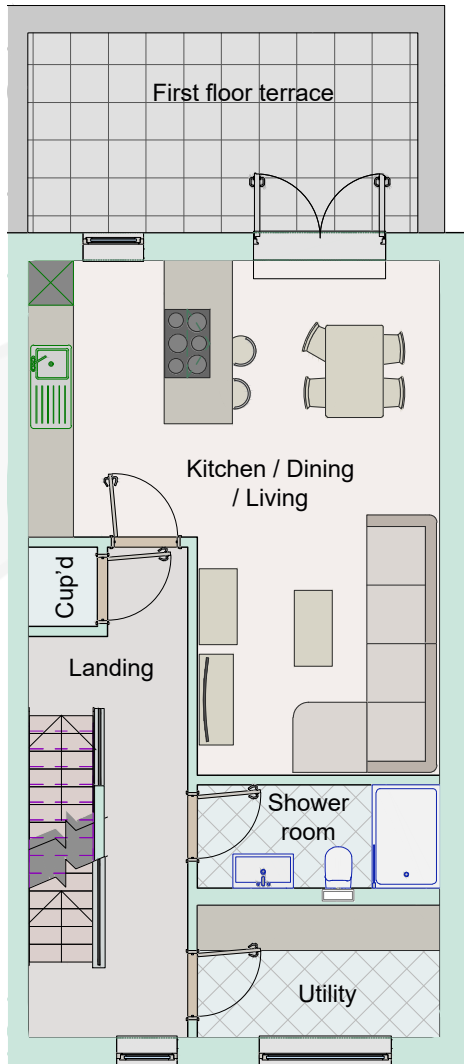
Bedroom 2	12.7 m <sup>2</sup>
Bathroom	4.4 m <sup>2</sup>
Bedroom 1	15.7 m <sup>2</sup>
Cup'd	1 m <sup>2</sup>
Landing	3.4 m <sup>2</sup>

## Total Floor area's

Ground floor	2.5 m <sup>2</sup>	27 sq ft
First floor	56 m <sup>2</sup>	602 sq ft
Second floor	42 m <sup>2</sup>	452 sq ft
Total (GIA)	100.5 m <sup>2</sup>	1082 sq ft

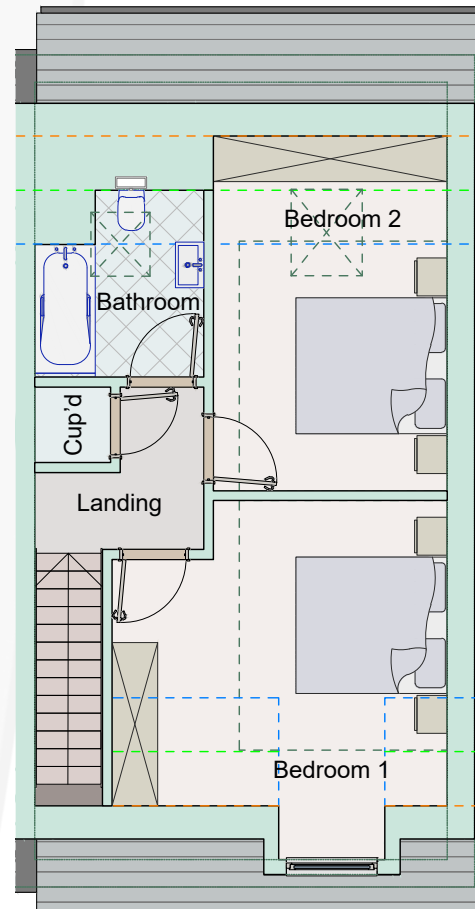
\* Fitted wardrobes supplied in bedroom 1 only.  
 \*\* Kitchens, wardrobes and general layouts are for guidance purposes only.

# The Orchard - Unit 8



**First floor plan**

Kitchen / Dining / Living	29.2 m <sup>2</sup>
Shower room	4.4 m <sup>2</sup>
Landing	9.6 m <sup>2</sup>
Cup'd	1.2 m <sup>2</sup>
Cup'd	0.8 m <sup>2</sup>
Cup'd	0.8 m <sup>2</sup>
Utility	3.7 m <sup>2</sup>



**Second floor plan**

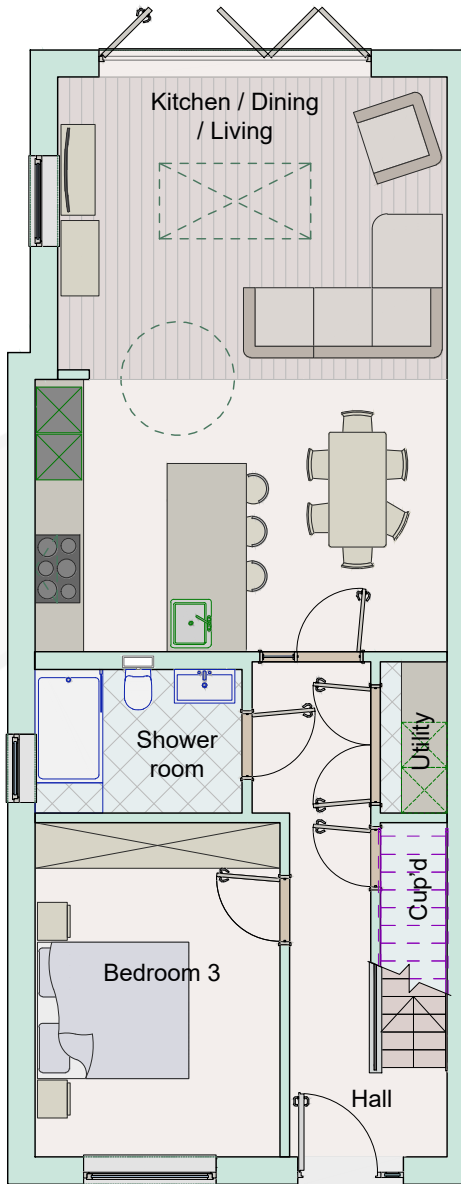
Bedroom 2	12.7 m <sup>2</sup>
Bathroom	4.4 m <sup>2</sup>
Bedroom 1	15.7 m <sup>2</sup>
Cup'd	1 m <sup>2</sup>
Landing	3.4 m <sup>2</sup>

**Total Floor area's**

Ground floor	2.5 m <sup>2</sup>	27 sq ft
First floor	56 m <sup>2</sup>	602 sq ft
Second floor	42 m <sup>2</sup>	452 sq ft
<b>Total (GIA)</b>	<b>100.5 m<sup>2</sup></b>	<b>1082 sq ft</b>

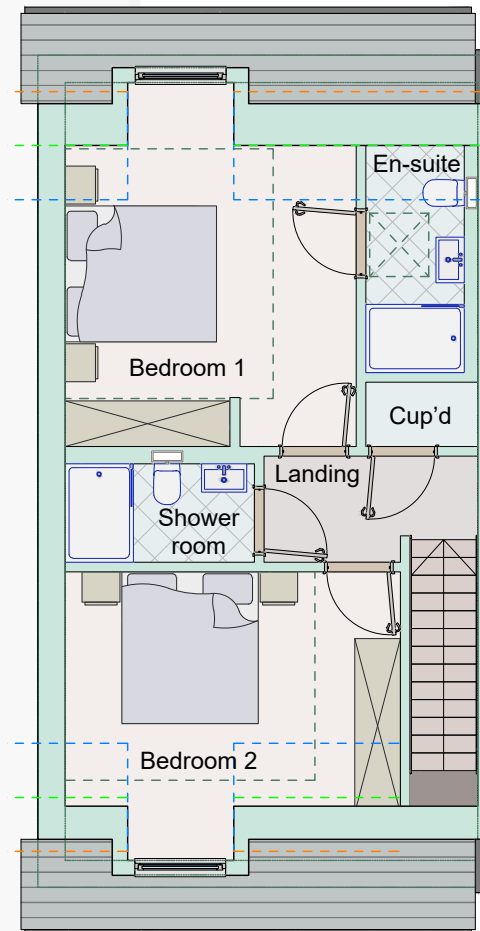
\* Fitted wardrobes supplied in bedroom 1 only.  
 \*\* Kitchens, wardrobes and general layouts are for guidance purposes only.

# The Orchard - Unit 9 (House type 2)



## Ground floor plan

Kitchen / Dining / Living	40.2 m <sup>2</sup>
Hall	9.3 m <sup>2</sup>
Bedroom 3	14.2 m <sup>2</sup>
Shower room	5.2 m <sup>2</sup>
Utility	1.8 m <sup>2</sup>
Cup'd	1.2 m <sup>2</sup>



## First floor plan

Bedroom 1	16.2 m <sup>2</sup>
Bed 1 en-suite	3.7 m <sup>2</sup>
Bedroom 2	14.1 m <sup>2</sup>
Shower room	3.3 m <sup>2</sup>
Landing	3.6 m <sup>2</sup>
Cup'd	1.2 m <sup>2</sup>

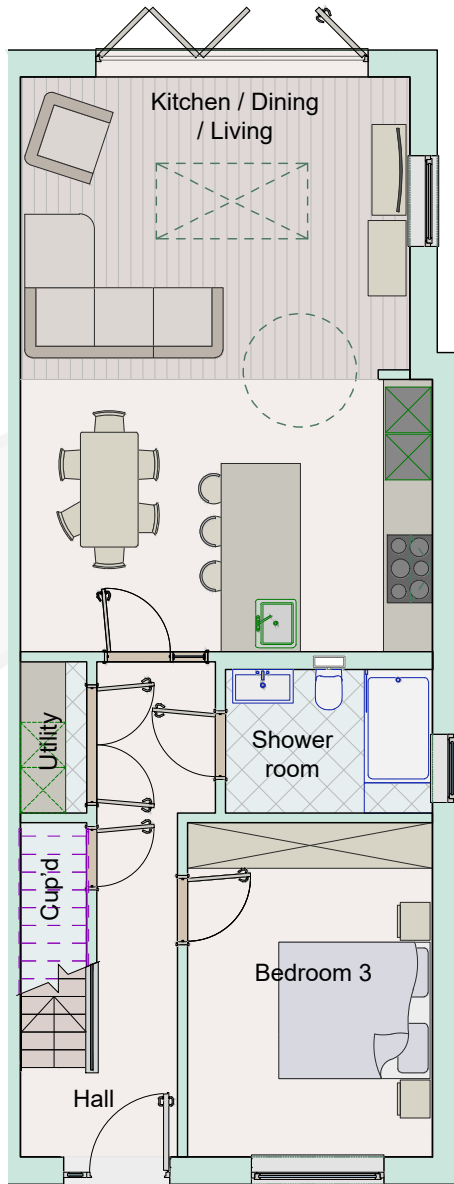
## Total Floor area's

Ground floor	76.6 m <sup>2</sup> 825 sq ft
First floor	48.2 m <sup>2</sup> 519 sq ft
Total (GIA)	124.8m <sup>2</sup> 1343.3 sq ft

\* Fitted wardrobes supplied in bedroom 1 only.  
 \*\* Kitchens, wardrobes and general layouts are for guidance purposes only.

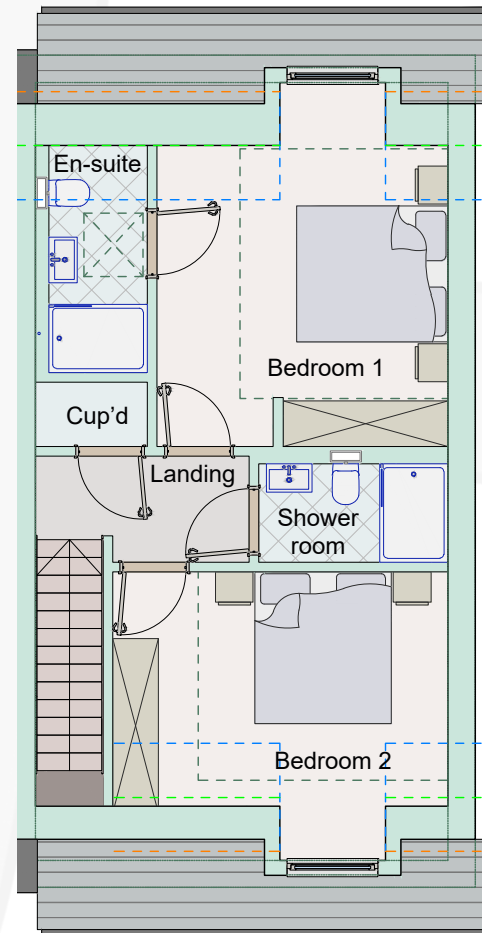


# The Orchard - Unit 10 (House type 2)



## Ground floor plan

Kitchen / Dining / Living	40.2 m <sup>2</sup>
Hall	9.3 m <sup>2</sup>
Bedroom 3	14.2 m <sup>2</sup>
Shower room	5.2 m <sup>2</sup>
Utility	1.8 m <sup>2</sup>
Cup'd	1.2 m <sup>2</sup>



## First floor plan

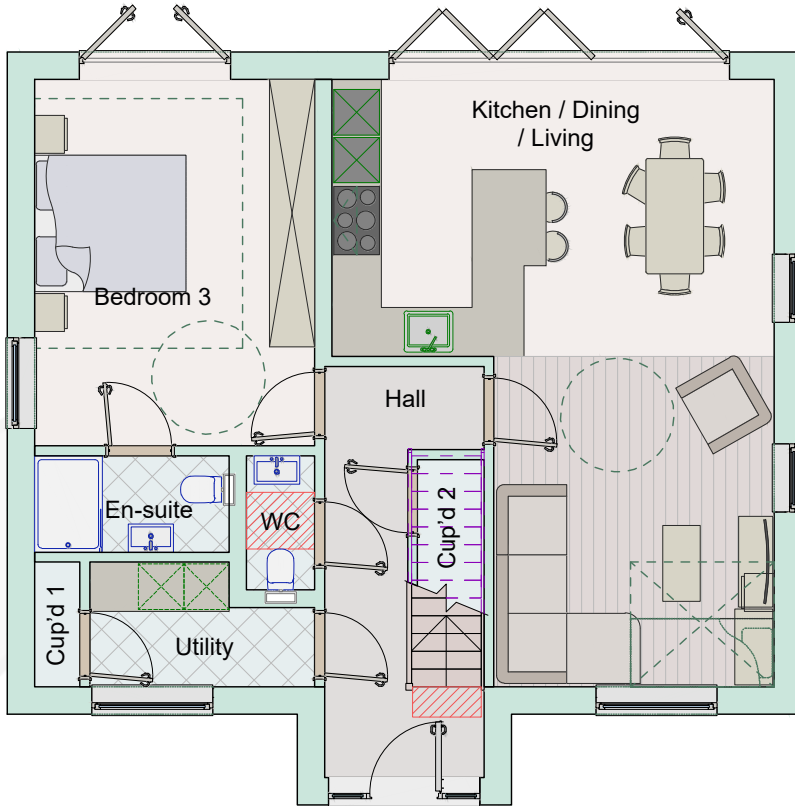
Bedroom 1	16.2 m <sup>2</sup>
Bed 1 en-suite	3.7 m <sup>2</sup>
Bedroom 2	14.1 m <sup>2</sup>
Shower room	3.3 m <sup>2</sup>
Landing	3.6 m <sup>2</sup>
Cup'd	1.2 m <sup>2</sup>

## Total Floor area's

Ground floor	76.6 m <sup>2</sup> 825 sq ft
First floor	48.2 m <sup>2</sup> 519 sq ft
Total (GIA)	124.8m <sup>2</sup> 1343.3 sq ft

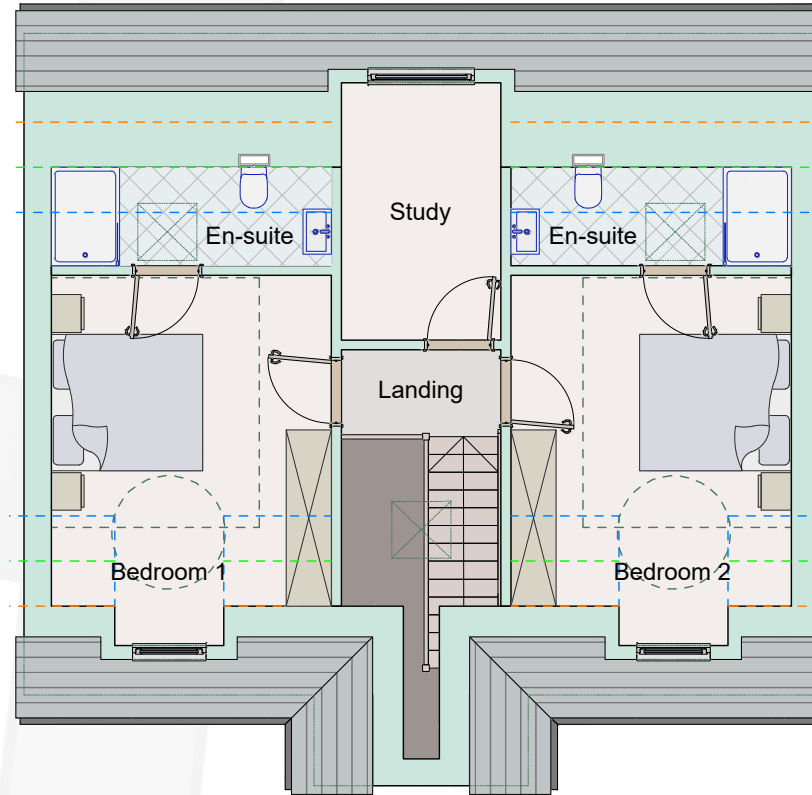
\* Fitted wardrobes supplied in bedroom 1 only.  
\*\* Kitchens, wardrobes and general layouts are for guidance purposes only.

# The Orchard - Unit 11 (House type 3)



## Ground floor plan

Kitchen / Dining / Living	38 m <sup>2</sup>
Hall	8.3 m <sup>2</sup>
Bedroom 3	18 m <sup>2</sup>
En-suite	3.3 m <sup>2</sup>
WC	1.6 m <sup>2</sup>
Utility	4.2 m <sup>2</sup>
Cup'd 1	1 m <sup>2</sup>
Cup'd 2	1 m <sup>2</sup>



## First floor plan

Bedroom 1	15.6 m <sup>2</sup>
Bed 1 en-suite	4.8 m <sup>2</sup>
Study	7.2 m <sup>2</sup>
Bedroom 2	15.6 m <sup>2</sup>
Bed 2 en-suite	4.8 m <sup>2</sup>
Landing	2.3 m <sup>2</sup>

## Total Floor area's

Ground floor	81.8 m <sup>2</sup>
	880 sq ft
First floor	56.4 m <sup>2</sup>
	607 sq ft
Total (GIA)	138.2m <sup>2</sup>
	1487 sq ft

\* Fitted wardrobes supplied in bedroom 1 only.  
 \*\* Kitchens, wardrobes and general layouts are for guidance purposes only.

# The Orchard - Unit 11 (House type 3)



*Units 1 & 2*



*Units 1 & 2*



*Units 9 & 10*



*Unit 11*





**First Floor Unit 3, Les Caches Business Park, St Martins, Guernsey. GY4 6PH.  
01481 238878 | sales@infinity.gg.**