

# The Orchard

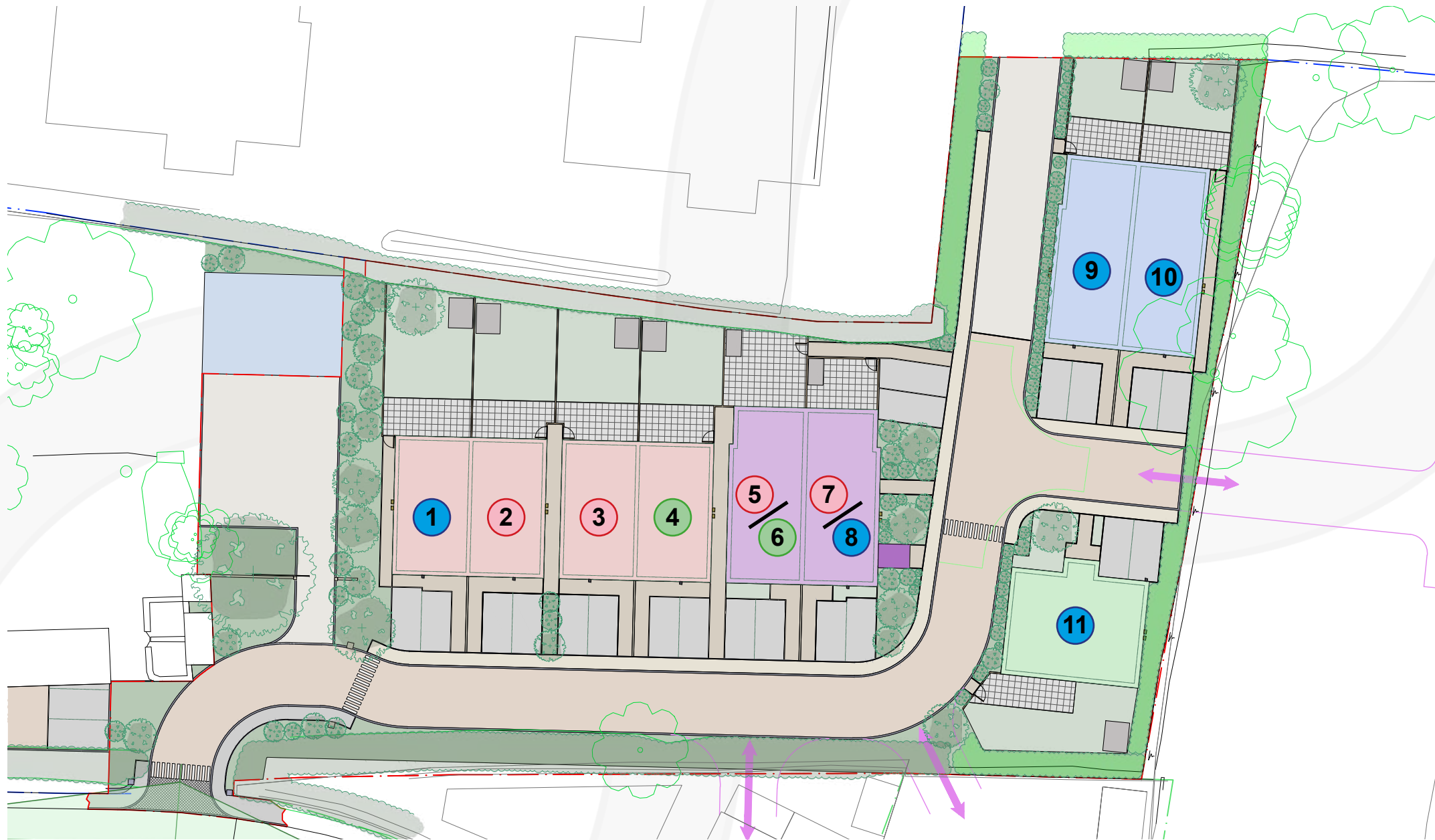


INFINITY GROUP

[www.infinity.gg](http://www.infinity.gg)



# The Orchard - Site Plan



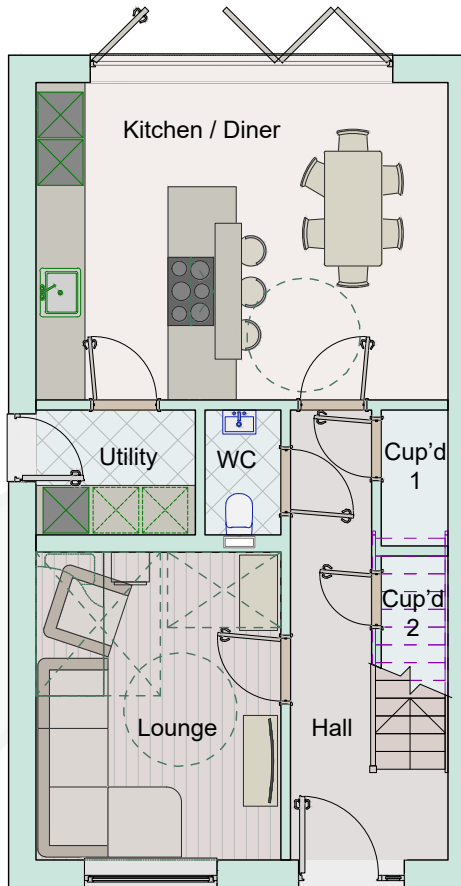
*The Orchard, Rue Du Friquet, Castel, GY5 7SS.*

# The Orchard - Schedule

| UNIT NO. | UNIT                                                     | Gross Internal Floor Area (sq ft) | Amenity Area (sq ft) | BEDS                | BATH / SHOWER          | PARKING | PRICE    | STATUS             |
|----------|----------------------------------------------------------|-----------------------------------|----------------------|---------------------|------------------------|---------|----------|--------------------|
| 1        | House Type 1A (LH)                                       | 1687                              | 872                  | 3                   | 3<br>+ 1 no. GF WC     | 2       | £955,000 | <b>Sold</b>        |
| 2        | House Type 1A (RH)                                       | 1687                              | 743                  | 3                   | 3<br>incl. GF shower   | 2       | £955,000 | <b>Under offer</b> |
| 3        | House Type 1B (LH)                                       | 1687                              | 700                  | 3                   | 3<br>+ 1 no. GF WC     | 2       | £955,000 | <b>Under offer</b> |
| 4        | House Type 1B (RH)                                       | 1687                              | 648                  | 3                   | 3<br>(incl. GF shower) | 2       | £955,000 | <b>Available</b>   |
| 5        | Ground floor apartment (LH)                              | 681                               | 420                  | 2<br>(incl. single) | 1                      | 1       | £525,000 | <b>Under offer</b> |
| 6        | 1 <sup>st</sup> and 2 <sup>nd</sup> floor apartment (LH) | 1082                              | 146<br>(FF terrace)  | 2                   | 2<br>(incl. FF shower) | 2       | £655,000 | <b>Available</b>   |
| 7        | Ground floor apartment (RH)                              | 681                               | 237                  | 2<br>(incl. single) | 1                      | 1       | £525,000 | <b>Under offer</b> |
| 8        | 1 <sup>st</sup> and 2 <sup>nd</sup> floor apartment (RH) | 1082                              | 146<br>(FF terrace)  | 2                   | 2<br>(incl. FF shower) | 2       | £655,000 | <b>Sold</b>        |
| 9        | House Type 2 (LH)                                        | 1343                              | 495                  | 3                   | 3<br>(incl. GF shower) | 2       | £895,000 | <b>Sold</b>        |
| 10       | House Type 2 (RH)                                        | 1343                              | 635                  | 3                   | 3<br>(incl. GF shower) | 2       | £895,000 | <b>Sold</b>        |
| 11       | House Type 3                                             | 1488                              | 764                  | 3                   | 3<br>+ 1 no. GF WC     | 2       | £895,000 | <b>Sold</b>        |

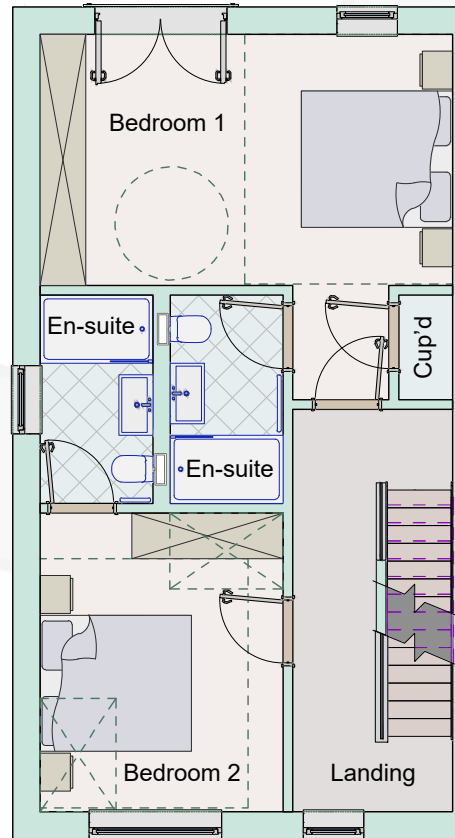
*For further details or viewings please contact our sales team.  
01481 238878 or sales@infinity.gg.*

# The Orchard - Unit 1 (House type 1A)



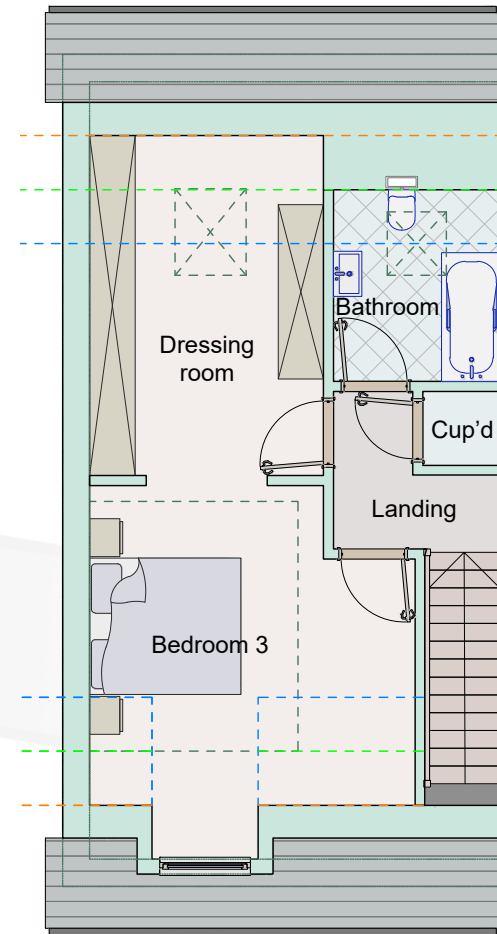
## Ground floor plan

|                 |                     |
|-----------------|---------------------|
| Kitchen / Diner | 22.9 m <sup>2</sup> |
| Utility         | 3.4 m <sup>2</sup>  |
| WC              | 1.6 m <sup>2</sup>  |
| Cup'd 1         | 1.3 m <sup>2</sup>  |
| Cup'd 2         | 1 m <sup>2</sup>    |
| Hall            | 7.6 m <sup>2</sup>  |
| Lounge          | 13.3 m <sup>2</sup> |



## First floor plan

|                |                     |
|----------------|---------------------|
| Bedroom 1      | 19.5 m <sup>2</sup> |
| Bed 1 en-suite | 4.1 m <sup>2</sup>  |
| Cup'd          | 0.9 m <sup>2</sup>  |
| Bedroom 2      | 12.7 m <sup>2</sup> |
| Bed 2 en-suite | 4.1 m <sup>2</sup>  |
| Landing        | 8.1 m <sup>2</sup>  |



## Second floor plan

|               |                     |
|---------------|---------------------|
| Bedroom 3     | 15.6 m <sup>2</sup> |
| Dressing room | 13.7 m <sup>2</sup> |
| Bathroom      | 4.6 m <sup>2</sup>  |
| Cup'd         | 1 m <sup>2</sup>    |
| Landing       | 3.4 m <sup>2</sup>  |

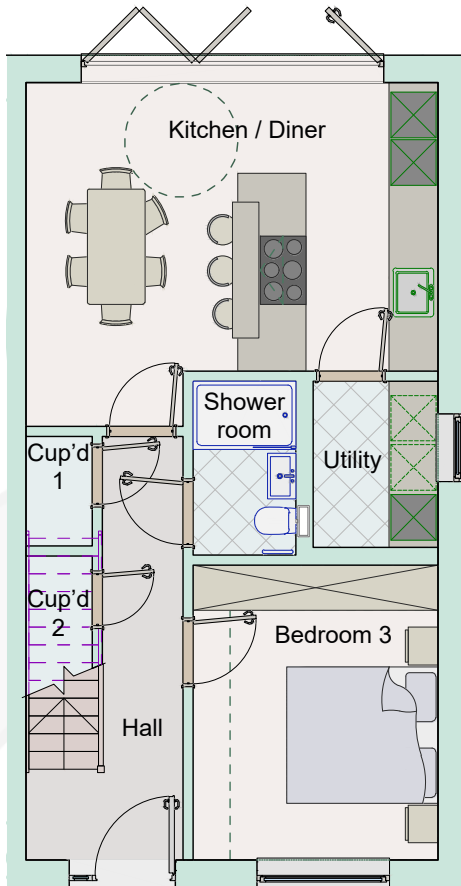
## Total Floor area's

|              |                                    |
|--------------|------------------------------------|
| Ground floor | 56 m <sup>2</sup><br>602 sq ft     |
| First floor  | 56 m <sup>2</sup><br>602 sq ft     |
| Second floor | 44.7 m <sup>2</sup><br>481 sq ft   |
| Total (GIA)  | 156.7 m <sup>2</sup><br>1687 sq ft |

\* Fitted wardrobes supplied in bedroom 1 only.

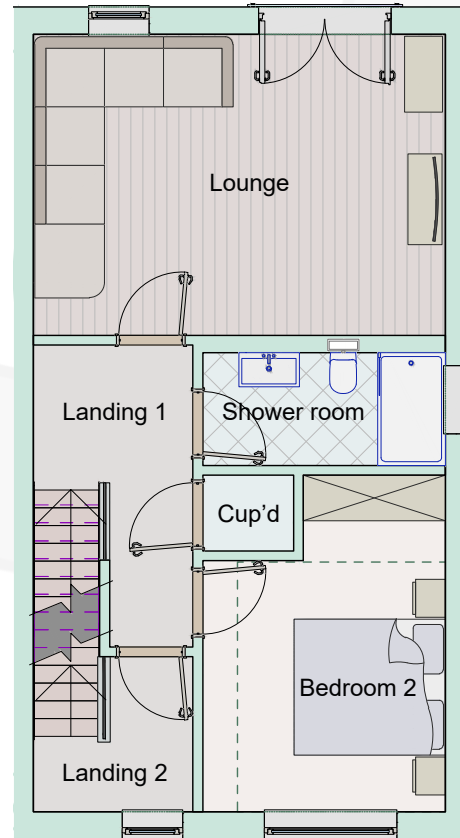
\*\* Kitchens, wardrobes and general layouts are for guidance purposes only.

# The Orchard - Unit 2 (House type 1A)



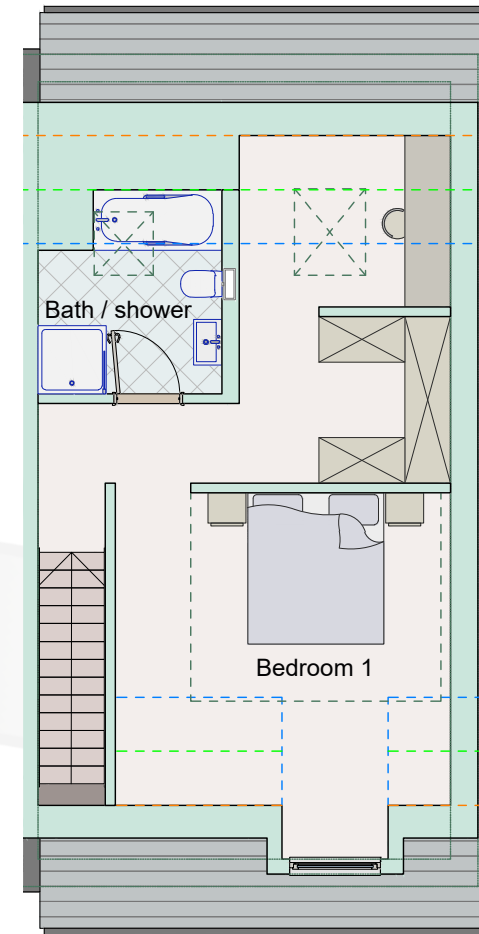
## Ground floor plan

|                 |                     |
|-----------------|---------------------|
| Kitchen / Diner | 22.3 m <sup>2</sup> |
| Utility         | 3.6 m <sup>2</sup>  |
| Shower room     | 3.1 m <sup>2</sup>  |
| Cup'd 1         | 1 m <sup>2</sup>    |
| Cup'd 2         | 1 m <sup>2</sup>    |
| Hall            | 7.2 m <sup>2</sup>  |
| Bedroom 3       | 12.6 m <sup>2</sup> |



## First floor plan

|             |                     |
|-------------|---------------------|
| Lounge      | 21.7 m <sup>2</sup> |
| Shower room | 4.8 m <sup>2</sup>  |
| Cup'd       | 0.9 m <sup>2</sup>  |
| Bedroom 2   | 12.8 m <sup>2</sup> |
| Landing 1   | 6.1 m <sup>2</sup>  |
| Landing 2   | 3.2 m <sup>2</sup>  |



## Second floor plan

|               |                     |
|---------------|---------------------|
| Bedroom 1     | 31.5 m <sup>2</sup> |
| Bath / shower | 5.9 m <sup>2</sup>  |

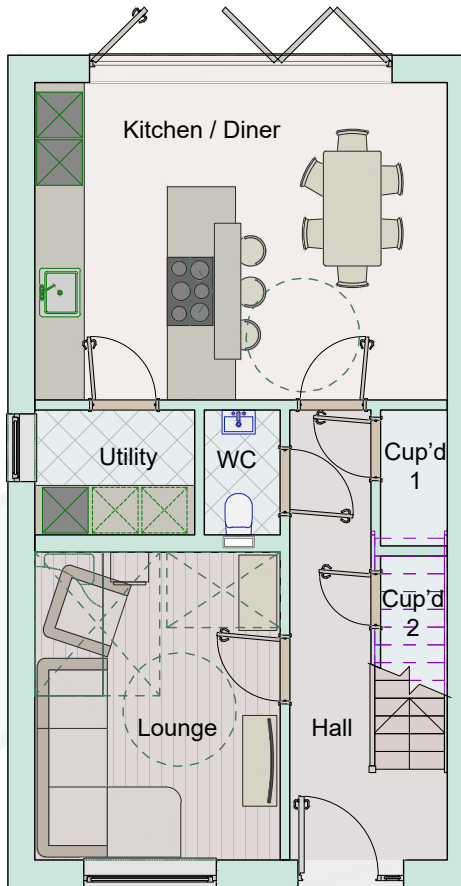
## Total Floor area's

|              |                                    |
|--------------|------------------------------------|
| Ground floor | 56 m <sup>2</sup><br>602 sq ft     |
| First floor  | 56 m <sup>2</sup><br>602 sq ft     |
| Second floor | 44.7 m <sup>2</sup><br>481 sq ft   |
| Total (GIA)  | 156.7 m <sup>2</sup><br>1687 sq ft |

\* Fitted wardrobes supplied in bedroom 1 only.

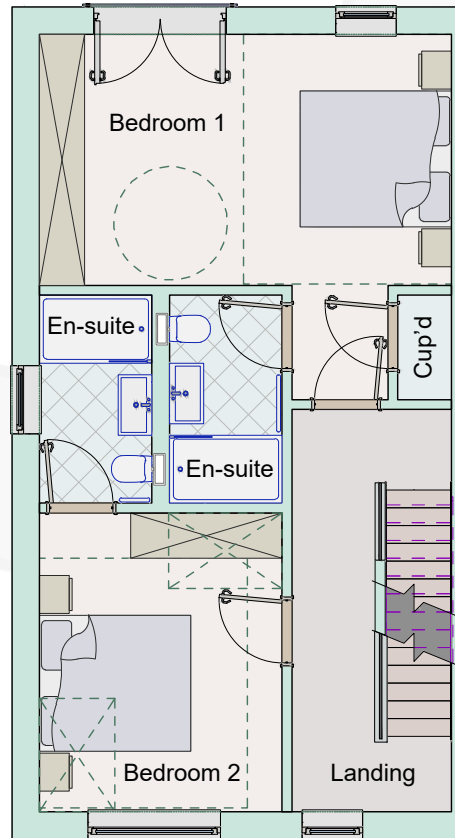
\*\* Kitchens, wardrobes and general layouts are for guidance purposes only.

# The Orchard - Unit 3 (House type 1B)



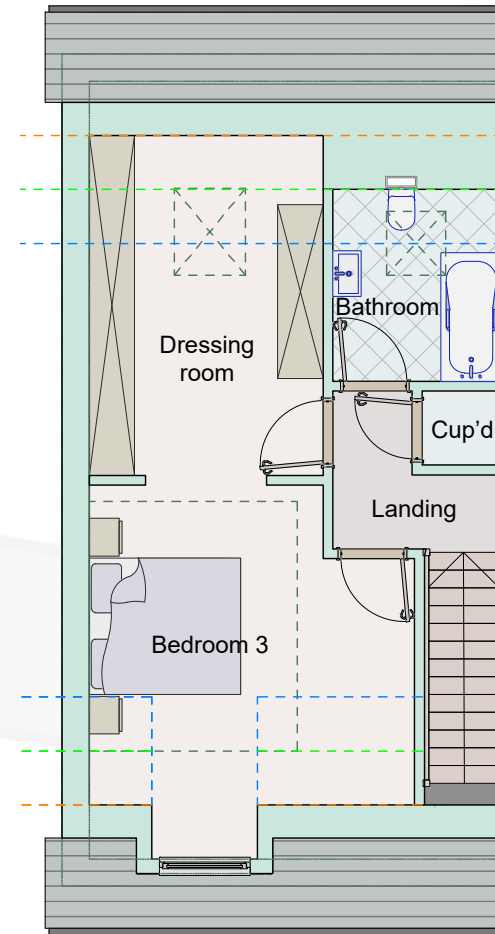
## Ground floor plan

|                 |                     |
|-----------------|---------------------|
| Kitchen / Diner | 22.9 m <sup>2</sup> |
| Utility         | 3.4 m <sup>2</sup>  |
| WC              | 1.6 m <sup>2</sup>  |
| Cup'd 1         | 1.3 m <sup>2</sup>  |
| Cup'd 2         | 1 m <sup>2</sup>    |
| Hall            | 7.6 m <sup>2</sup>  |
| Lounge          | 13.3 m <sup>2</sup> |



## First floor plan

|                |                     |
|----------------|---------------------|
| Bedroom 1      | 19.5 m <sup>2</sup> |
| Bed 1 en-suite | 4.1 m <sup>2</sup>  |
| Cup'd          | 0.9 m <sup>2</sup>  |
| Bedroom 2      | 12.7 m <sup>2</sup> |
| Bed 2 en-suite | 4.1 m <sup>2</sup>  |
| Landing        | 8.1 m <sup>2</sup>  |



## Second floor plan

|               |                     |
|---------------|---------------------|
| Bedroom 3     | 15.6 m <sup>2</sup> |
| Dressing room | 13.7 m <sup>2</sup> |
| Bathroom      | 4.6 m <sup>2</sup>  |
| Cup'd         | 1 m <sup>2</sup>    |
| Landing       | 3.4 m <sup>2</sup>  |

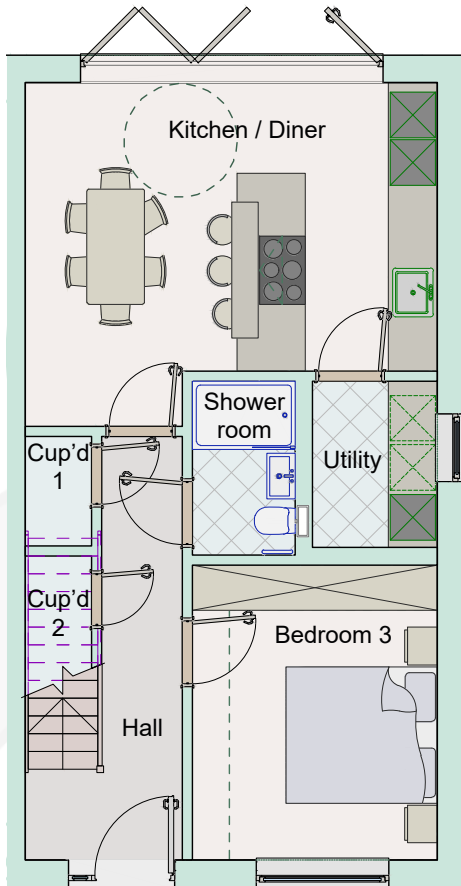
## Total Floor area's

|              |                                    |
|--------------|------------------------------------|
| Ground floor | 56 m <sup>2</sup><br>602 sq ft     |
| First floor  | 56 m <sup>2</sup><br>602 sq ft     |
| Second floor | 44.7 m <sup>2</sup><br>481 sq ft   |
| Total (GIA)  | 156.7 m <sup>2</sup><br>1687 sq ft |

\* Fitted wardrobes supplied in bedroom 1 only.

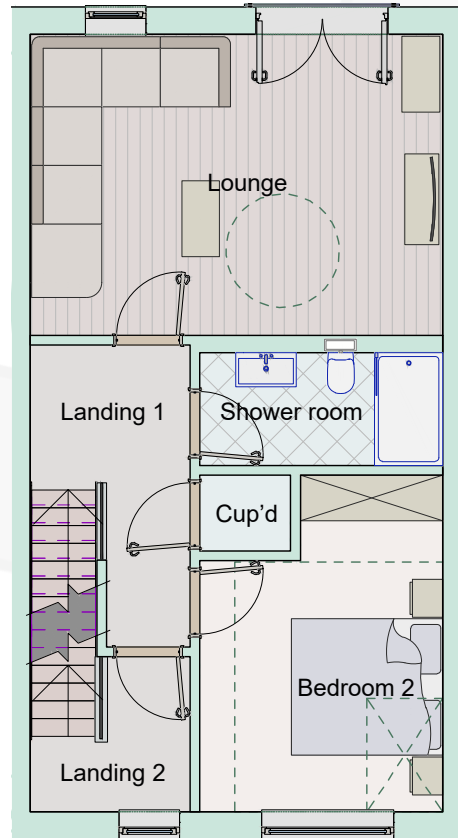
\*\* Kitchens, wardrobes and general layouts are for guidance purposes only.

# The Orchard - Unit 4 (House type 1B)



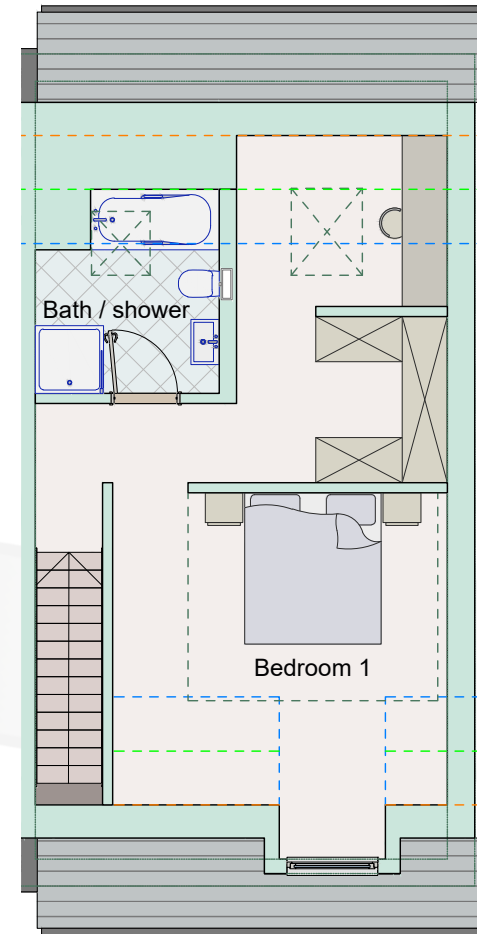
## Ground floor plan

|                 |                     |
|-----------------|---------------------|
| Kitchen / Diner | 22.3 m <sup>2</sup> |
| Utility         | 3.6 m <sup>2</sup>  |
| Shower room     | 3.1 m <sup>2</sup>  |
| Cup'd 1         | 1 m <sup>2</sup>    |
| Cup'd 2         | 1 m <sup>2</sup>    |
| Hall            | 7.2 m <sup>2</sup>  |
| Bedroom 3       | 12.6 m <sup>2</sup> |



## First floor plan

|             |                     |
|-------------|---------------------|
| Lounge      | 21.7 m <sup>2</sup> |
| Shower room | 4.8 m <sup>2</sup>  |
| Cup'd       | 0.9 m <sup>2</sup>  |
| Bedroom 2   | 12.8 m <sup>2</sup> |
| Landing 1   | 6.1 m <sup>2</sup>  |
| Landing 2   | 3.2 m <sup>2</sup>  |



## Second floor plan

|               |                     |
|---------------|---------------------|
| Bedroom 1     | 31.5 m <sup>2</sup> |
| Bath / shower | 5.9 m <sup>2</sup>  |

## Total Floor area's

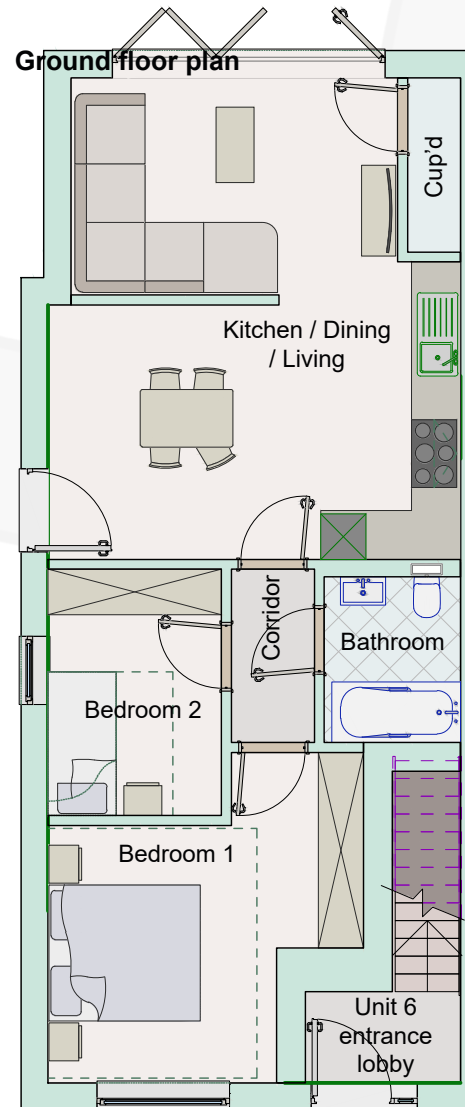
|              |                                    |
|--------------|------------------------------------|
| Ground floor | 56 m <sup>2</sup><br>602 sq ft     |
| First floor  | 56 m <sup>2</sup><br>602 sq ft     |
| Second floor | 44.7 m <sup>2</sup><br>481 sq ft   |
| Total (GIA)  | 156.7 m <sup>2</sup><br>1687 sq ft |

\* Fitted wardrobes supplied in bedroom 1 only.

\*\* Kitchens, wardrobes and general layouts are for guidance purposes only.



# The Orchard - Unit 5



|                           |                     |
|---------------------------|---------------------|
| Kitchen / Dining / Living | 31.3 m <sup>2</sup> |
| Bathroom                  | 3.9 m <sup>2</sup>  |
| Corridor                  | 2.5 m <sup>2</sup>  |
| Cup'd                     | 1.4 m <sup>2</sup>  |
| Bedroom 1                 | 14 m <sup>2</sup>   |
| Bedroom 2                 | 7.5 m <sup>2</sup>  |

## Total Floor area's

|              |                     |
|--------------|---------------------|
| Ground floor | 63.3 m <sup>2</sup> |
|              | 681 sq ft           |
| Total (GIA)  | 63.3 m <sup>2</sup> |
|              | 681 sq ft           |

\* Fitted wardrobes supplied in bedroom 1 only.

\*\* Kitchens, wardrobes and general layouts are for guidance purposes only.



# The Orchard - Unit 7



## Ground floor plan

|                  |                     |
|------------------|---------------------|
| Kitchen / Dining |                     |
| / Living         | 31.3 m <sup>2</sup> |
| Bathroom         | 3.9 m <sup>2</sup>  |
| Corridor         | 2.5 m <sup>2</sup>  |
| Cup'd            | 1.4 m <sup>2</sup>  |
| Bedroom 1        | 14 m <sup>2</sup>   |
| Bedroom 2        | 7.5 m <sup>2</sup>  |

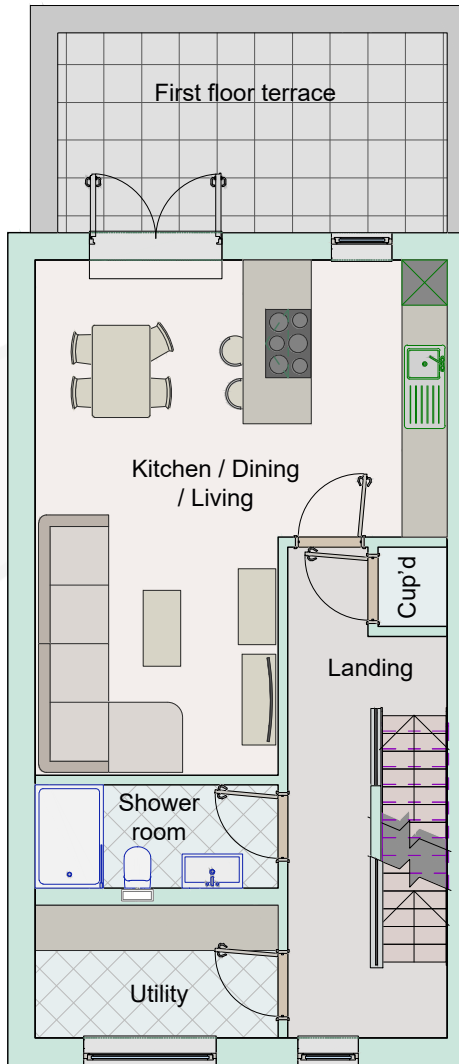
## Total Floor area's

|              |                     |
|--------------|---------------------|
| Ground floor | 63.3 m <sup>2</sup> |
|              | 681 sq ft           |
| Total (GIA)  | 63.3 m <sup>2</sup> |
|              | 681 sq ft           |

\* Fitted wardrobes supplied in bedroom 1 only.

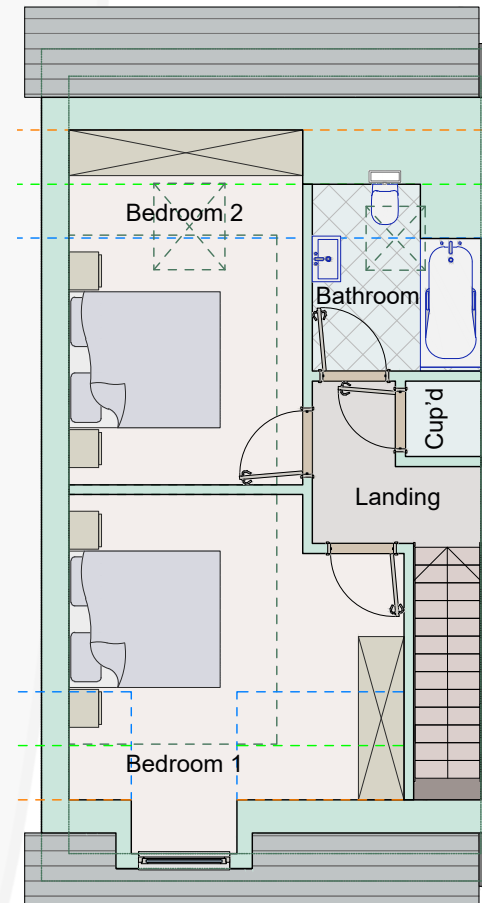
\*\* Kitchens, wardrobes and general layouts are for guidance purposes only.

# The Orchard - Unit 6



## First floor plan

|                           |                     |
|---------------------------|---------------------|
| Kitchen / Dining / Living | 29.2 m <sup>2</sup> |
| Shower room               | 4.4 m <sup>2</sup>  |
| Landing                   | 9.6 m <sup>2</sup>  |
| Cup'd                     | 1.2 m <sup>2</sup>  |
| Cup'd                     | 0.8 m <sup>2</sup>  |
| Cup'd                     | 0.8 m <sup>2</sup>  |
| Utility                   | 3.7 m <sup>2</sup>  |



## Second floor plan

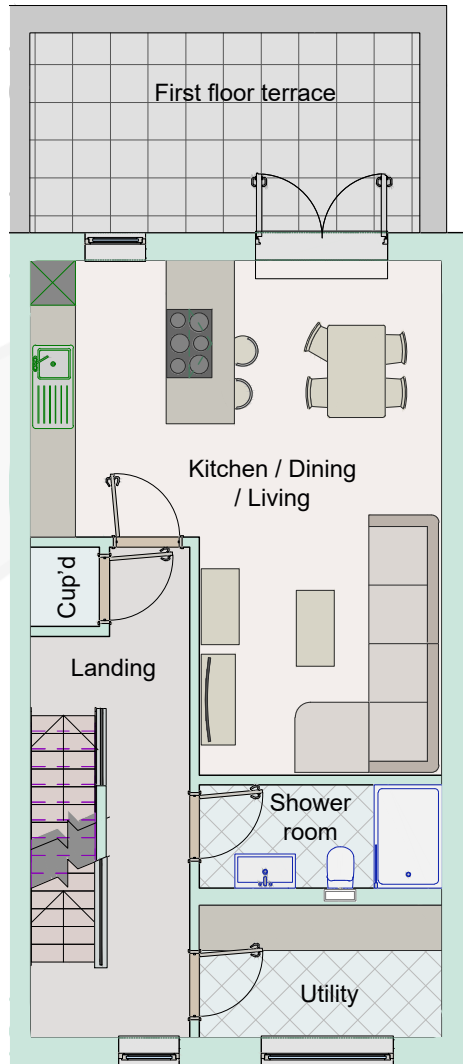
|           |                     |
|-----------|---------------------|
| Bedroom 2 | 12.7 m <sup>2</sup> |
| Bathroom  | 4.4 m <sup>2</sup>  |
| Bedroom 1 | 15.7 m <sup>2</sup> |
| Cup'd     | 1 m <sup>2</sup>    |
| Landing   | 3.4 m <sup>2</sup>  |

## Total Floor area's

|              |                      |
|--------------|----------------------|
| Ground floor | 2.5 m <sup>2</sup>   |
|              | 27 sq ft             |
| First floor  | 56 m <sup>2</sup>    |
|              | 602 sq ft            |
| Second floor | 42 m <sup>2</sup>    |
|              | 452 sq ft            |
| Total (GIA)  | 100.5 m <sup>2</sup> |
|              | 1082 sq ft           |

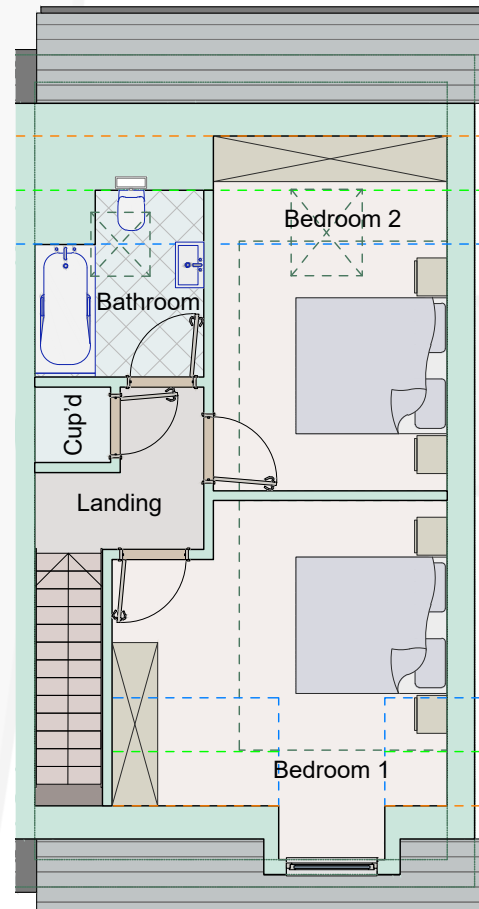
\* Fitted wardrobes supplied in bedroom 1 only.  
 \*\* Kitchens, wardrobes and general layouts are for guidance purposes only.

# The Orchard - Unit 8



## First floor plan

|                           |                     |
|---------------------------|---------------------|
| Kitchen / Dining / Living | 29.2 m <sup>2</sup> |
| Shower room               | 4.4 m <sup>2</sup>  |
| Landing                   | 9.6 m <sup>2</sup>  |
| Cup'd                     | 1.2 m <sup>2</sup>  |
| Cup'd                     | 0.8 m <sup>2</sup>  |
| Cup'd                     | 0.8 m <sup>2</sup>  |
| Utility                   | 3.7 m <sup>2</sup>  |



## Second floor plan

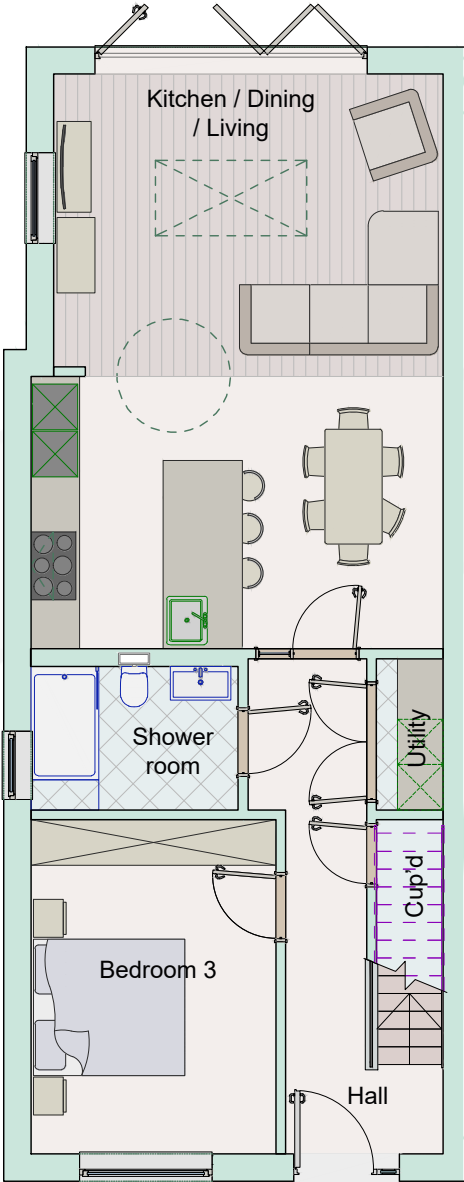
|           |                     |
|-----------|---------------------|
| Bedroom 2 | 12.7 m <sup>2</sup> |
| Bathroom  | 4.4 m <sup>2</sup>  |
| Bedroom 1 | 15.7 m <sup>2</sup> |
| Cup'd     | 1 m <sup>2</sup>    |
| Landing   | 3.4 m <sup>2</sup>  |

## Total Floor area's

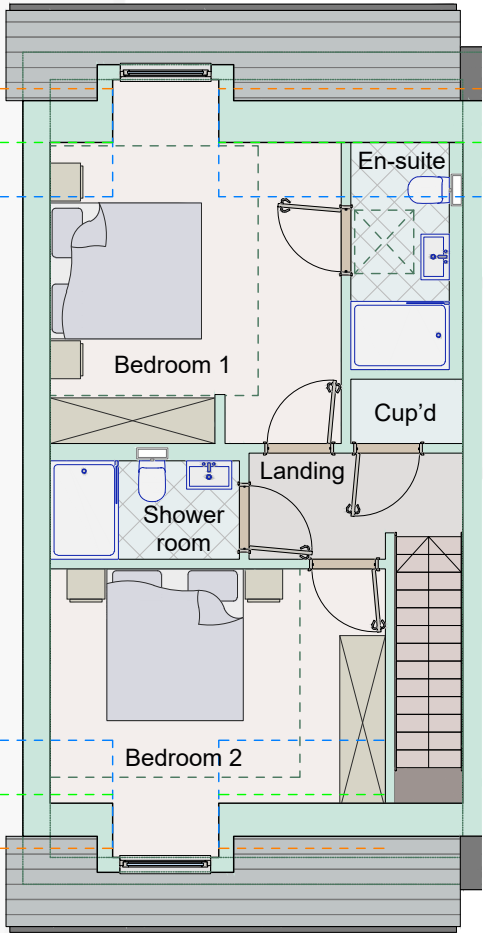
|              |                      |
|--------------|----------------------|
| Ground floor | 2.5 m <sup>2</sup>   |
|              | 27 sq ft             |
| First floor  | 56 m <sup>2</sup>    |
|              | 602 sq ft            |
| Second floor | 42 m <sup>2</sup>    |
|              | 452 sq ft            |
| Total (GIA)  | 100.5 m <sup>2</sup> |
|              | 1082 sq ft           |

\* Fitted wardrobes supplied in bedroom 1 only.  
 \*\* Kitchens, wardrobes and general layouts are for guidance purposes only.

# The Orchard - Unit 9 (House type 2)



| Ground floor plan         |                     |
|---------------------------|---------------------|
| Kitchen / Dining / Living | 40.2 m <sup>2</sup> |
| Hall                      | 9.3 m <sup>2</sup>  |
| Bedroom 3                 | 14.2 m <sup>2</sup> |
| Shower room               | 5.2 m <sup>2</sup>  |
| Utility                   | 1.8 m <sup>2</sup>  |
| Cup'd                     | 1.2 m <sup>2</sup>  |



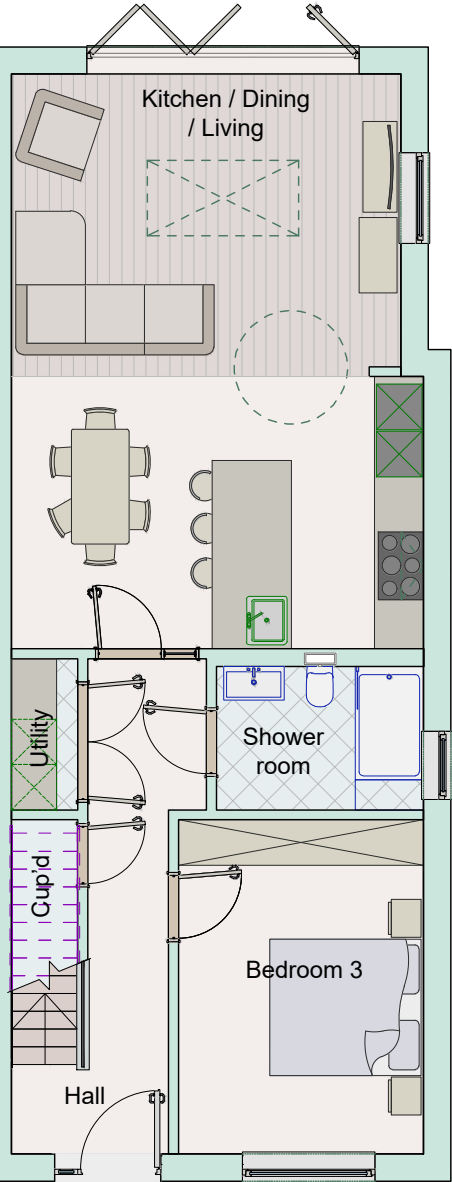
| First floor plan |                     |
|------------------|---------------------|
| Bedroom 1        | 16.2 m <sup>2</sup> |
| Bed 1 en-suite   | 3.7 m <sup>2</sup>  |
| Bedroom 2        | 14.1 m <sup>2</sup> |
| Shower room      | 3.3 m <sup>2</sup>  |
| Landing          | 3.6 m <sup>2</sup>  |
| Cup'd            | 1.2 m <sup>2</sup>  |

| Total Floor area's |                                     |
|--------------------|-------------------------------------|
| Ground floor       | 76.6 m <sup>2</sup><br>825 sq ft    |
| First floor        | 48.2 m <sup>2</sup><br>519 sq ft    |
| Total (GIA)        | 124.8m <sup>2</sup><br>1343.3 sq ft |

\* Fitted wardrobes supplied in bedroom 1 only.  
 \*\* Kitchens, wardrobes and general layouts are for guidance purposes only.

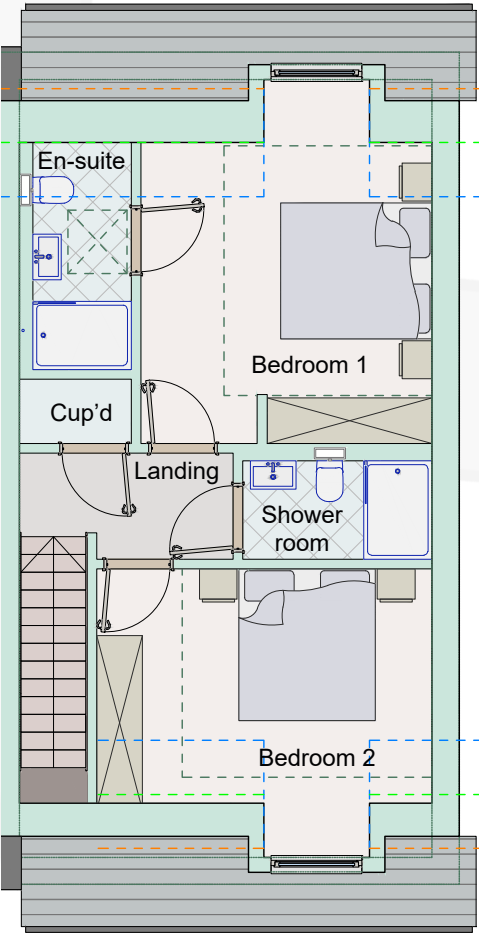


# The Orchard - Unit 10 (House type 2)



### Ground floor plan

|                           |                     |
|---------------------------|---------------------|
| Kitchen / Dining / Living | 40.2 m <sup>2</sup> |
| Hall                      | 9.3 m <sup>2</sup>  |
| Bedroom 3                 | 14.2 m <sup>2</sup> |
| Shower room               | 5.2 m <sup>2</sup>  |
| Utility                   | 1.8 m <sup>2</sup>  |
| Cup'd                     | 1.2 m <sup>2</sup>  |



### First floor plan

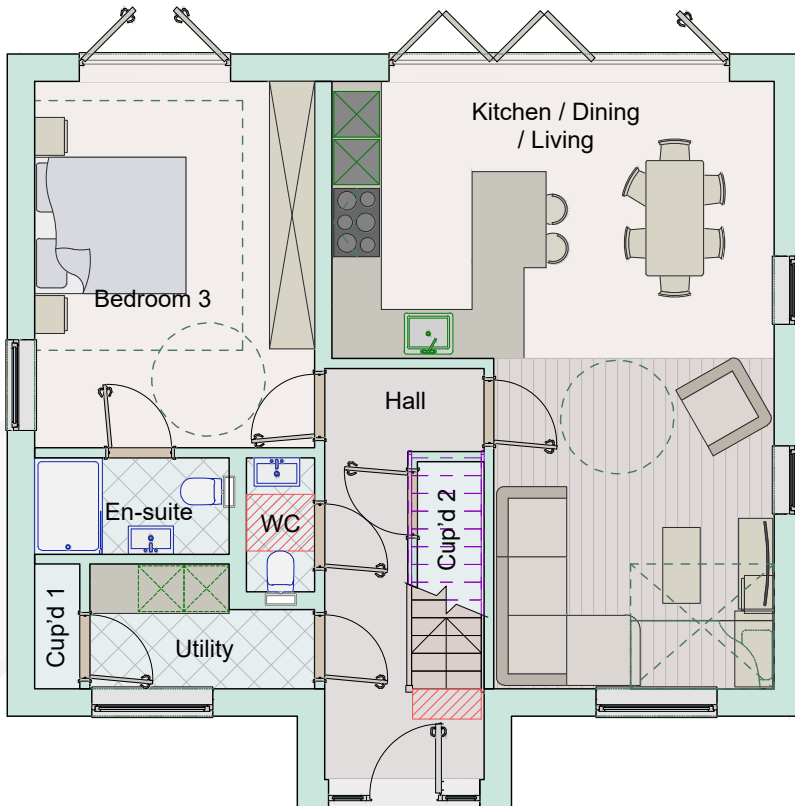
|                |                     |
|----------------|---------------------|
| Bedroom 1      | 16.2 m <sup>2</sup> |
| Bed 1 en-suite | 3.7 m <sup>2</sup>  |
| Bedroom 2      | 14.1 m <sup>2</sup> |
| Shower room    | 3.3 m <sup>2</sup>  |
| Landing        | 3.6 m <sup>2</sup>  |
| Cup'd          | 1.2 m <sup>2</sup>  |

### Total Floor area's

|              |                                     |
|--------------|-------------------------------------|
| Ground floor | 76.6 m <sup>2</sup><br>825 sq ft    |
| First floor  | 48.2 m <sup>2</sup><br>519 sq ft    |
| Total (GIA)  | 124.8m <sup>2</sup><br>1343.3 sq ft |

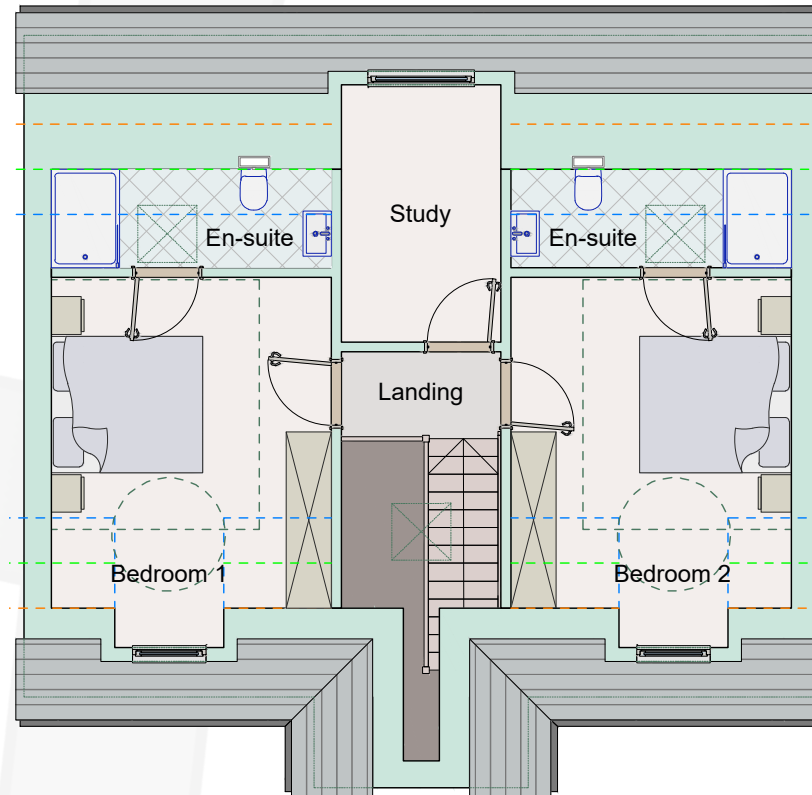
\* Fitted wardrobes supplied in bedroom 1 only.  
\*\* Kitchens, wardrobes and general layouts are for guidance purposes only.

# The Orchard - Unit 11 (House type 3)



## Ground floor plan

|                           |                    |
|---------------------------|--------------------|
| Kitchen / Dining / Living | 38 m <sup>2</sup>  |
| Hall                      | 8.3 m <sup>2</sup> |
| Bedroom 3                 | 18 m <sup>2</sup>  |
| En-suite                  | 3.3 m <sup>2</sup> |
| WC                        | 1.6 m <sup>2</sup> |
| Utility                   | 4.2 m <sup>2</sup> |
| Cup'd 1                   | 1 m <sup>2</sup>   |
| Cup'd 2                   | 1 m <sup>2</sup>   |



## First floor plan

|                |                     |
|----------------|---------------------|
| Bedroom 1      | 15.6 m <sup>2</sup> |
| Bed 1 en-suite | 4.8 m <sup>2</sup>  |
| Study          | 7.2 m <sup>2</sup>  |
| Bedroom 2      | 15.6 m <sup>2</sup> |
| Bed 2 en-suite | 4.8 m <sup>2</sup>  |
| Landing        | 2.3 m <sup>2</sup>  |

## Total Floor area's

|              |                                   |
|--------------|-----------------------------------|
| Ground floor | 81.8 m <sup>2</sup><br>880 sq ft  |
| First floor  | 56.4 m <sup>2</sup><br>607 sq ft  |
| Total (GIA)  | 138.2m <sup>2</sup><br>1487 sq ft |

\* Fitted wardrobes supplied in bedroom 1 only.

\*\* Kitchens, wardrobes and general layouts are for guidance purposes only.

# The Orchard - Unit 11 (House type 3)



*Units 1 & 2*



*Units 1 & 2*



*Units 9 & 10*



*Unit 11*





**First Floor Unit 3, Les Caches Business Park, St Martins, Guernsey. GY4 6PH.  
01481 238878 | sales@infinity.gg.**